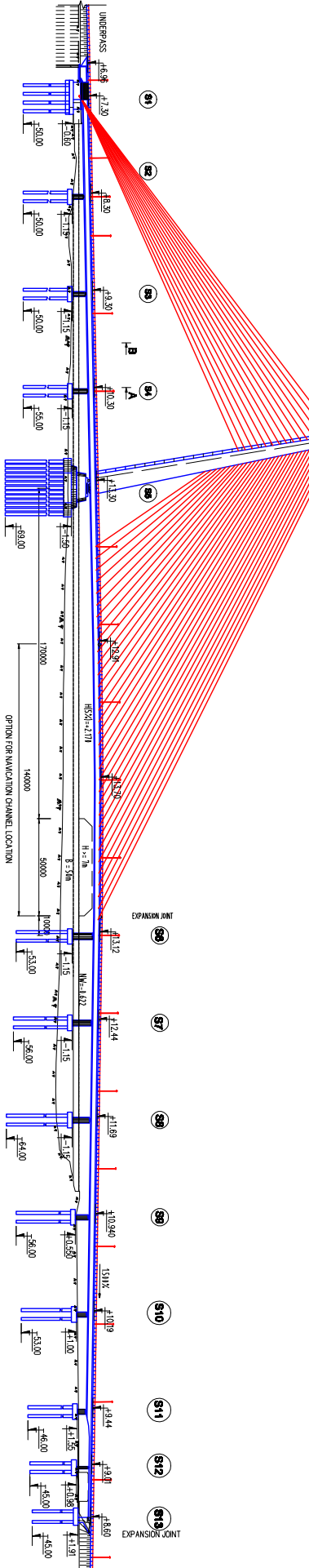
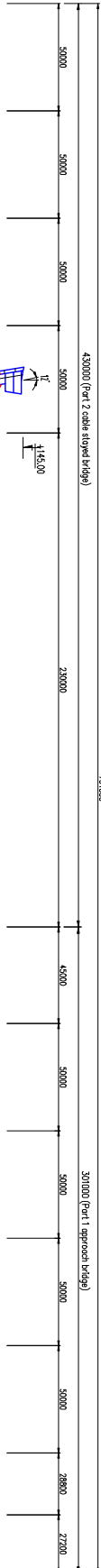
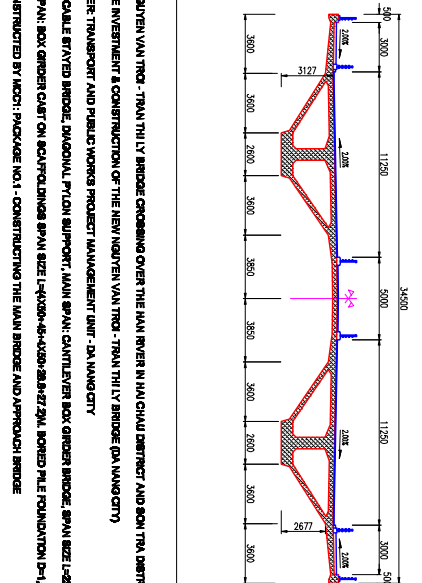
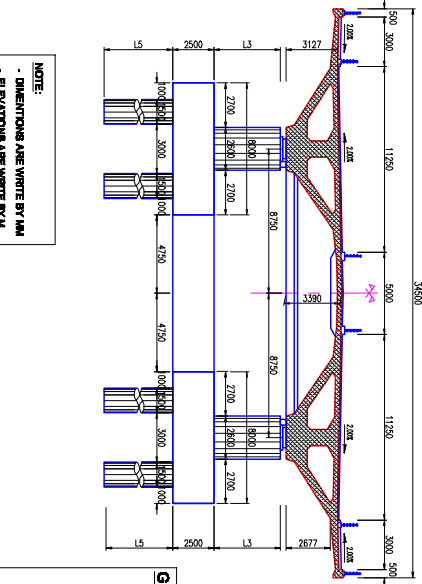


GENERAL VIEW OF NGUYEN VAN TROI - TRAN THUY LY BRIDGE



SECTION A - A

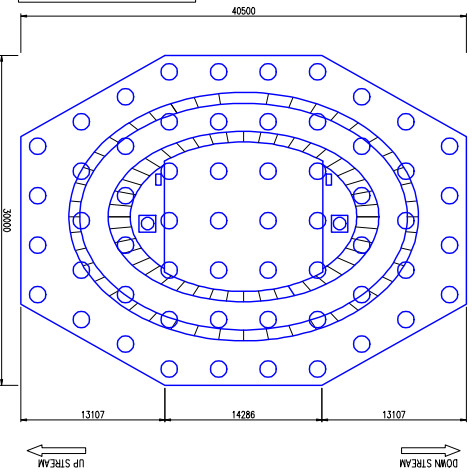
SECTION B - B



NOTE:
- DIMENSIONS ARE WRITTE BY MM
- ELEVATIONS ARE WRITTE BY M

GENERAL:

- LOCATION: NGUYEN VAN TROI - TRAN THUY LY BRIDGE CROSSING OVER THE MAIN RIVER IN HA CHAU DISTRICT AND SON TRAI DISTRICT - DANANG CITY.
- PROJECT: THE INVESTMENT & CONSTRUCTION OF THE NEW NGUYEN VAN TROI - TRAN THUY LY BRIDGE (DANANG CITY)
- THE EMPLOYER: TRANSPORT AND PUBLIC WORKS PROJECT MANAGEMENT UNIT - DANANG CITY
- STRUCTURE: CABLE STAYED BRIDGE, DIAGONAL Pylon SUPPORT, MAIN SPAN: CANTILEVER BOX GIRDER BRIDGE, SPAN SIZE L=320M.
- APPROACH SPAN: BOX GIRDER ONT ON SCAFFOLDING SPAN SIZE L=100M-4x100M-2x100M, BORED PILE FOUNDATION D=1.5M.
- PORTION CONSTRUCTED BY MOCI: PACKAGE NO.1 - CONSTRUCTING THE MAIN BRIDGE AND APPROACH BRIDGE



PLAN VIEW OF S6 PIER